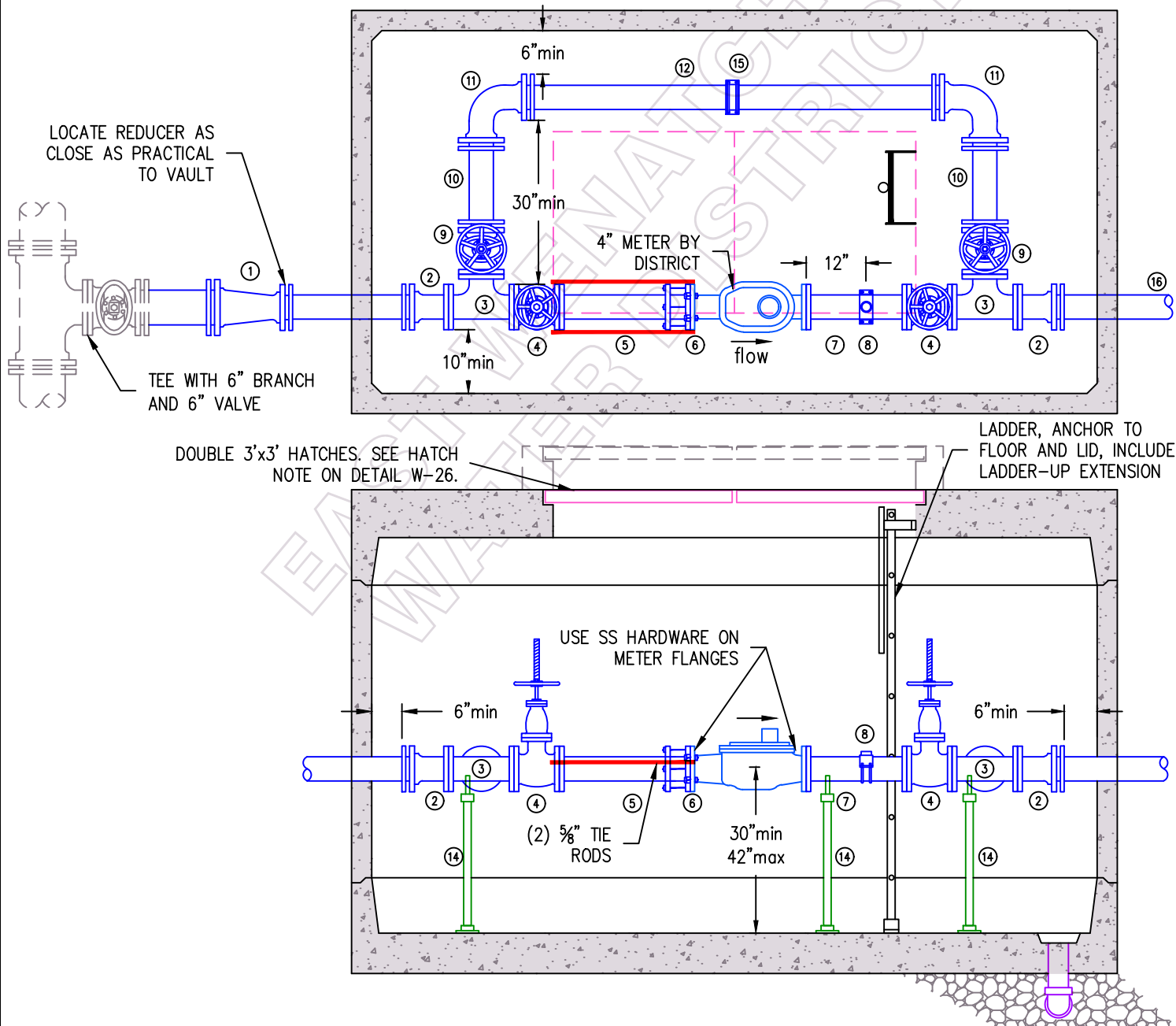


- ① 6"x4" REDUCER (RJ)
- ② 4" FLxRJ ADAPTER
- ③ 4" TEE (FL)
- ④ 4" RSGV w/HANDWHEEL (FL)
- ⑤ 4" DI PIPE FLxPE, 26" LENGTH
- ⑥ 4" FCA, DO NOT "PUSH HOME" PIPE
- ⑦ 4" DI PIPE FLxFL, 20" LENGTH
- ⑧ 2"x4" SADDLE w/2" PLUG
- ⑨ 4" RSGV (FLxMJ) w/HANDWHEEL
- ⑩ 4" DI PIPE, 20" LENGTH
- ⑪ 4" 90° BEND (MJ)
- ⑫ 4" DI PIPE, 84" LENGTH
- ⑬ 4" FLxMJ ADAPTER
- ⑭ STANDON OR GRINNELL PIPE SUPPORT (5 total)
- ⑮ 4"x1/2" SADDLE W/ 1/2" BRONZE BALL VALVE FOR DRAIN, ORIENT DOWN.
- ⑯ 4" DI PIPE

1. SEE W-26 FOR ADDITIONAL VAULT INSTALLATION DETAILS
2. SENSUS OMNI C2 METER LAY LENGTH = 20"
3. TIE ROD MATERIAL SHALL BE PER W-07.
4. ALL MECHANICAL JOINTS SHALL BE RESTRAINED PER DETAIL W-16.
5. USE ONE FULL LENGTH OF 4" PIPE THROUGH THE VAULT TO INSURE ALIGNMENT. CUT OUT FOR INSTALLATION OF ASSEMBLY.
6. VAULT MINIMUM INSIDE DIMENSIONS OF 12'Lx6'Wx6.5'H, UTILITY VAULT 612LA OR APPROVED EQUAL.
7. 4" METER RATED CAPACITY = 1,000 GPM x 80% = 800 GPM
8. ALL JOINTS SHALL BE RESTRAINED BETWEEN THE WATERMAIN AND THE METER ASSEMBLY. ALL JOINTS ON THE DOWNSTREAM (CUSTOMER) SIDE OF THE METER SHALL BE RESTRAINED TO NO LESS THAN 50 FEET PAST THE VAULT.
9. ALL VALVES SHALL BE RISING-STEM VALVES.



**East Wenatchee
Water District**



WATER SYSTEM STANDARD DETAIL

4" METER ASSEMBLY