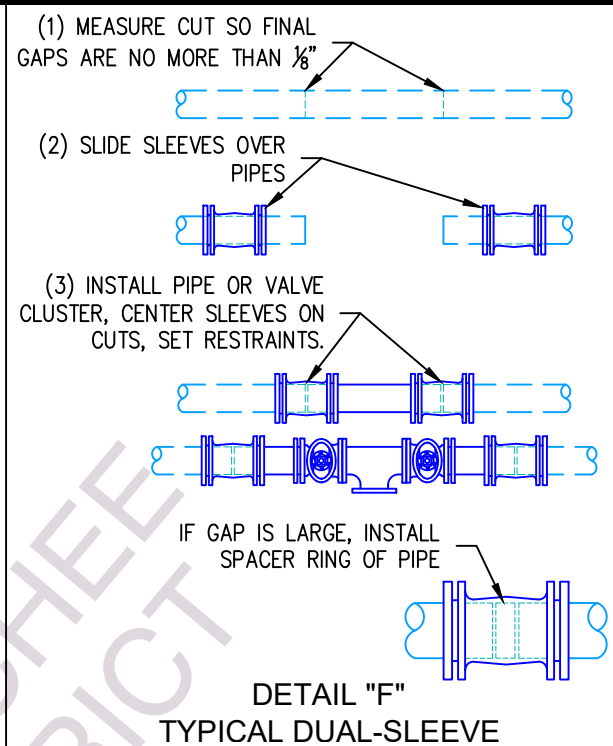
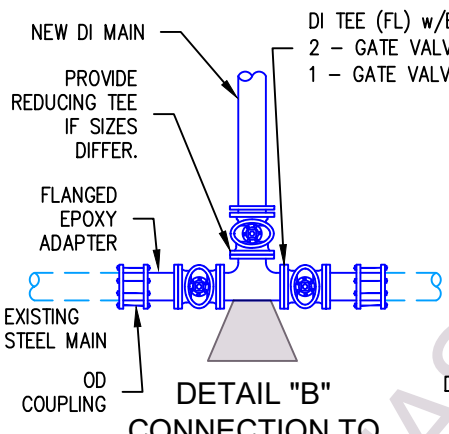


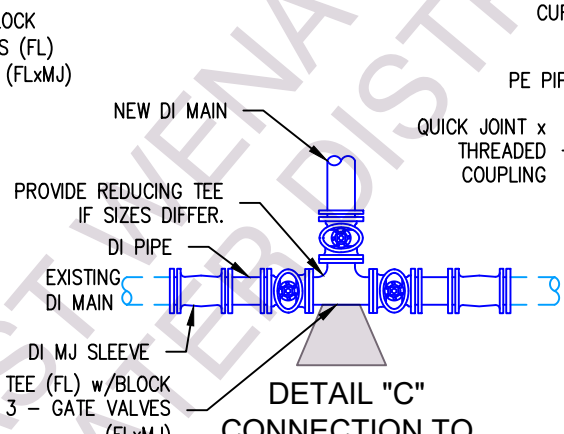
DETAIL "A"
CONNECTION TO EXISTING BRANCH MAIN



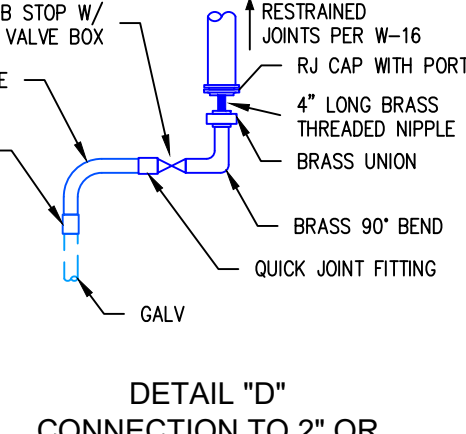
DETAIL "F"
TYPICAL DUAL-SLEEVE



DETAIL "B"
CONNECTION TO EXISTING STEEL MAIN

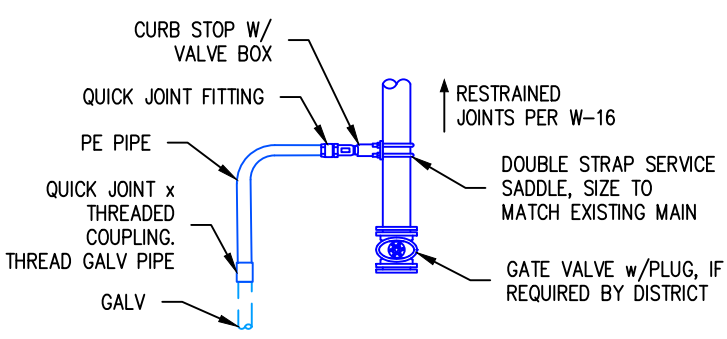


DETAIL "C"
CONNECTION TO EXISTING D.I. MAIN



DETAIL "D"
CONNECTION TO 2" OR SMALLER LOOPED MAIN

- DISTRICT WILL SELECT WHICH DETAIL TO USE AT EACH CONNECTION.
- OD COUPLINGS 3" DIAMETER AND LARGER: ROMAC 501, 511 OR EQUAL, WITH 7" CENTER RING LENGTH MINIMUM. CUT PIPE SUCH THAT NO GAP OCCURS BETWEEN NEW AND EXISTING PIPE INSIDE COUPLING. CUT AND INSTALL SPACER PIPE IF GAP LARGER THAN 1/2" OCCURS.
- RJ = RESTRAINED JOINT: MEGALUGS, FIELD-LOK GASKETS OR DISTRICT APPROVED EQUAL. SEE STANDARD DETAIL W-16.
- PRE-PRESSURE TEST TEE/CROSS/VALVE ASSEMBLIES BEFORE CUTTING INTO EXISTING MAINS.
- FLANGED EPOXY ADAPTER IS A FLxPE STEEL SPOOL.
 - NOMINAL O.D. SIZE STEEL PIPE (e.g. 6" = 6.0" O.D.) WITH 3/16" MIN. WALL THICKNESS.
 - FULLY COATED WITH EPOXY OR POWDER COATING, NSF61 CERTIFIED.
 - FLANGE PER AWWA C207 CLASS D, MINIMUM THICKNESS OF:
 - 4" DIAMETER AND LESS: 0.625" THICK.
 - 6" TO 10" DIAMETER: 0.688" THICK.
 - 12" DIAMETER: 0.812" THICK.



DETAIL "E"
CONNECTION TO 2" OR SMALLER DEAD END MAIN



East Wenatchee Water District
WATER SYSTEM STANDARD DETAIL

COPYRIGHT 2025 EAST WENATCHEE WATER DISTRICT. MAY BE REPRODUCED UNMODIFIED FOR DISTRICT PROJECTS. OTHER REPRODUCTION OR USE WITHOUT THE DISTRICT'S WRITTEN CONSENT IS PROHIBITED.

CONNECTIONS TO EXISTING MAINS

FILENAME: EWD TW28
REVISED: JUN 11, 2025
DRAWING No. W-22
SHEET No. 27