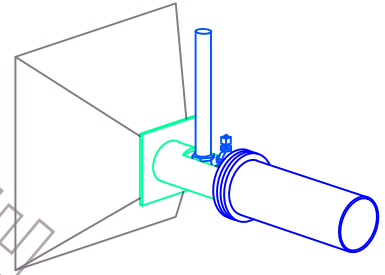
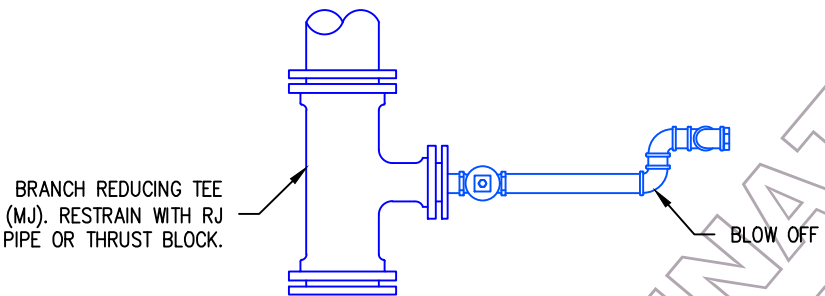


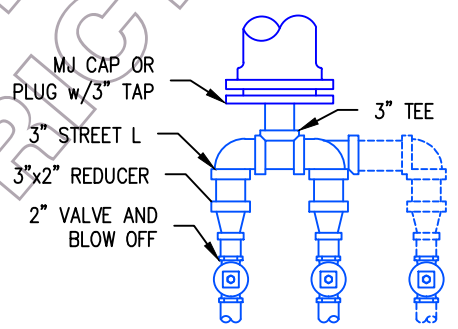
**OPTION 1 - PLAN**  
(2" BLOW OFF SHOWN)



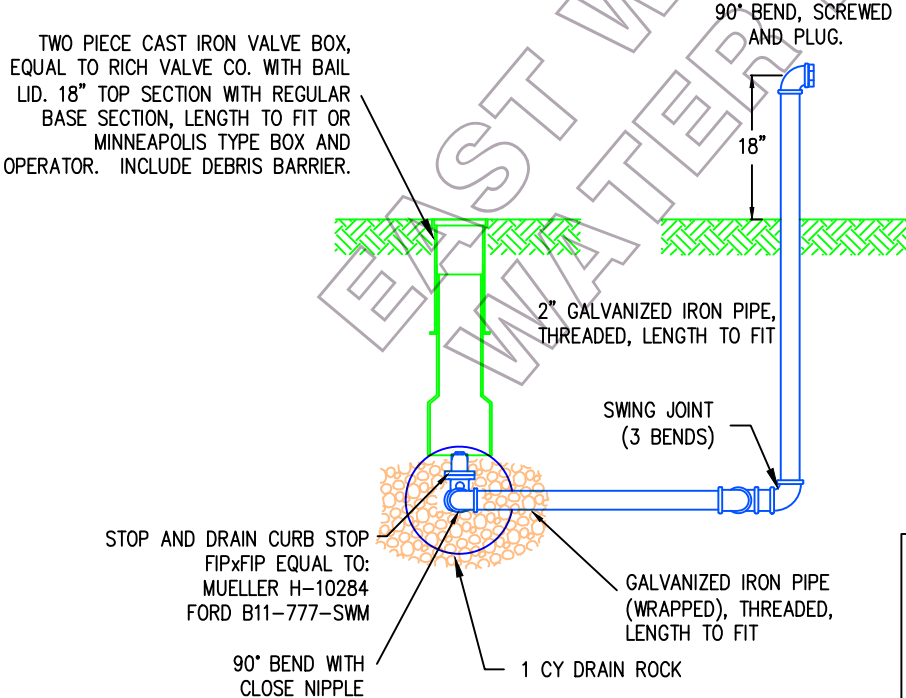
**3D VIEW**



**OPTION 2 - PLAN**

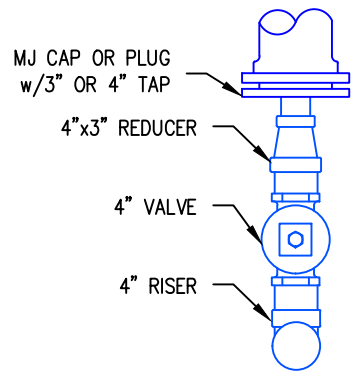


**MULTIPLE BLOW OFF**



**ELEVATION**

FOR INSTALLATIONS LONGER THAN 6 MONTHS  
2" BLOW OFF SHOWN



**4" BLOW OFF**

1. THIS DETAIL IS NOT TO BE USED IN SITUATIONS WHERE THE BLOW-OFF MAY STAY IN THE GROUND FOR A PERIOD OF MORE THAN ONE YEAR.
2. MINIMUM BLOW OFF SIZE SHALL BE 2" FOR 8" AND SMALLER MAINS. 3" OR DOUBLE 2" BLOW OFF FOR 10" AND 12" MAINS. 4" BLOW OFF ON 14" AND LARGER MAINS. LARGER BLOW OFFS MAY BE REQUIRED DEPENDING ON AVAILABLE SYSTEM PRESSURE.
3. PE PIPE AND FITTINGS MAY BE USED ON ONE SIDE OF CURB STOP. GALV MUST BE USED ON AT LEAST ONE SIDE.

**East Wenatchee  
Water District**



WATER SYSTEM STANDARD DETAIL

**CONSTRUCTION  
BLOW-OFF ASSEMBLY**