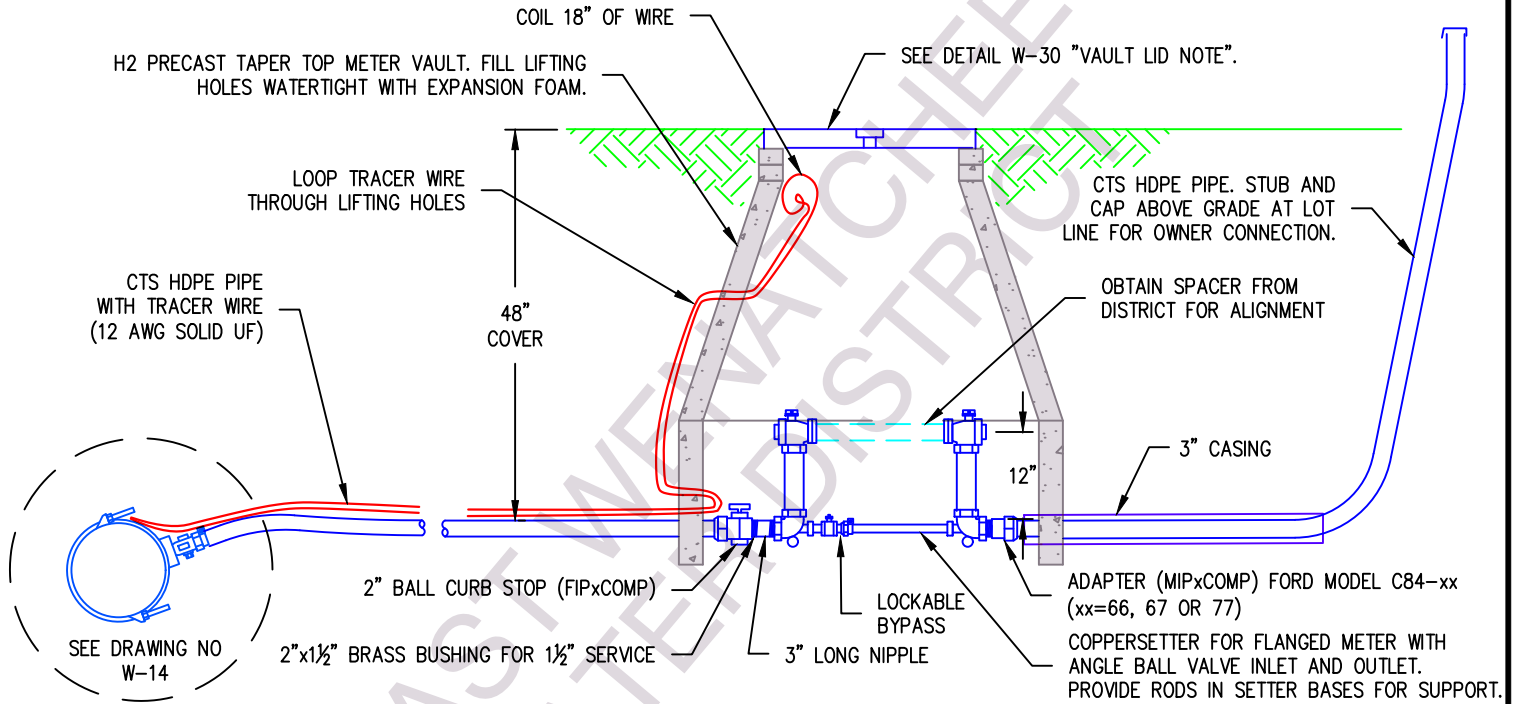


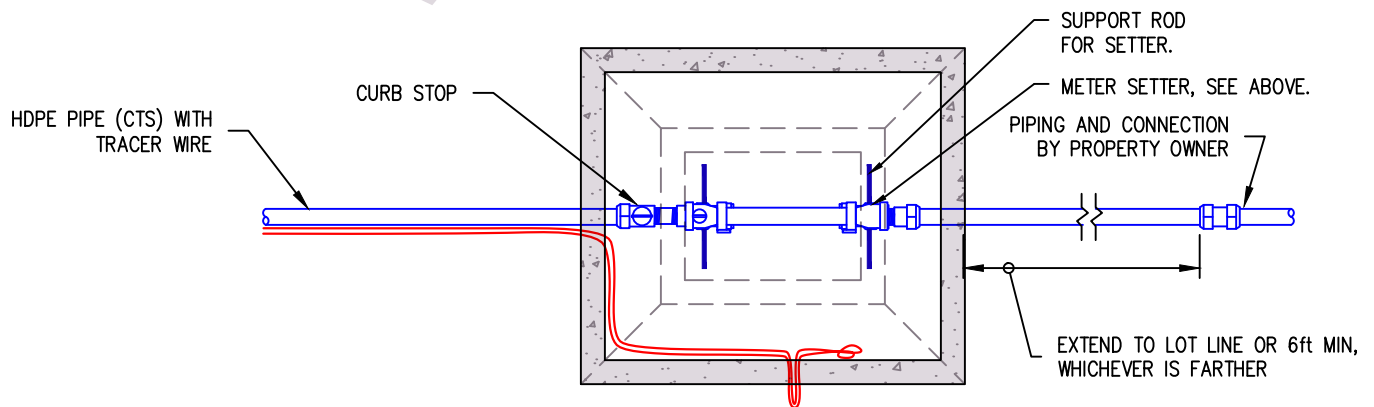
- 1) ALL PIPE TO BE HDPE (NOT INCLUDING SETTER).
- 2) SEE DETAIL W-14 FOR SERVICE LINE AND TAP SIZING.
- 3) SEE DETAIL W-29 FOR METER VAULT INSTALLATION DETAILS.
- 4) PRESSURE TEST ENTIRE SERVICE THROUGH SETTER AND TAILPIPE AT 250 psi. TEMPORARY SETTER JUMPERS AND TAILPIPE CAPS FOR TESTING PROVIDED BY DISTRICT. RETURN TO DISTRICT AFTER TESTING.
- 5) MAXIMUM METER RATINGS: 1.5" = 160 GPM, 2" = 200 GPM.

SETTERS

SIZE	FORD	McDONALD	MUELLER
1½"	VBB76-12B-11-66-NL	20-B612-WW-FF-665	1½x12 695-B-2423N
2"	VBB77-12B-11-77-NL	20-B712-WW-FF-775	2x12 105-B-2423N



ELEVATION



PLAN



East Wenatchee Water District

WATER SYSTEM STANDARD DETAIL

COPYRIGHT 2025 EAST WENATCHEE WATER DISTRICT. MAY BE REPRODUCED UNMODIFIED FOR DISTRICT PROJECTS. OTHER REPRODUCTION OR USE WITHOUT THE DISTRICT'S WRITTEN CONSENT IS PROHIBITED.

1½" AND 2" WATER SERVICE

FILENAME: EWD TW23

REVISED: JUL 21, 2025

DRAWING No. W-18

SHEET No. 19