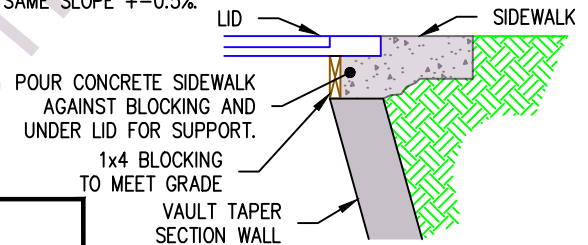
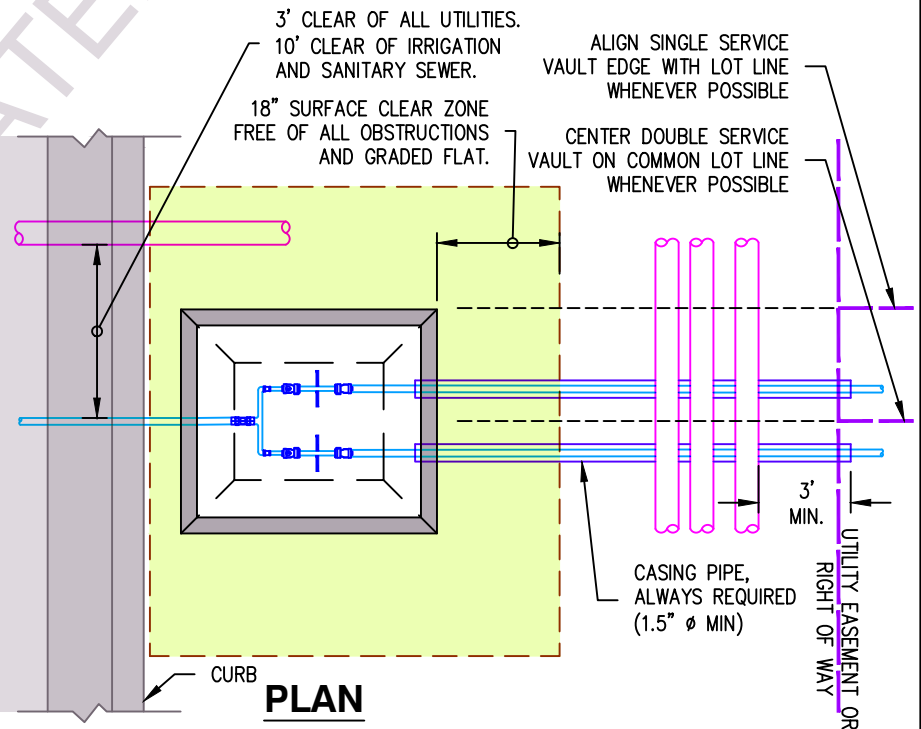


- A. WHERE SIDEWALKS WILL BE INSTALLED (NOW OR FUTURE), INSTALL ONE FULL PANEL OF WALK AROUND EACH VAULT LID.
- B. SIDEWALK PANEL TO BE 4" THICK; WIDTH TO MATCH ROAD CATEGORY; 48" LENGTH OR AS DIRECTED BY CITY OR COUNTY. BROOM FINISH WITH SMOOTH TROWELED PERIMETER, UNLESS DIRECTED OTHERWISE BY THE COUNTY OR CITY.
- C. GROUT LIDS TO FINISHED GRADE BEFORE SIDEWALKS ARE POURED. SCORE WALK WITH CONSTRUCTION JOINT AT EACH LID CORNER.
- D. SLOPE LID WITH SIDEWALK FOR DRAINAGE 0.5% TO 2% PER WSDOT STANDARD PLAN F-30.10. ALL LIDS MUST BE AT THE SAME SLOPE $\pm 0.5\%$.



1. INSTALL VAULT IN RIGHT OF WAY OR UTILITY EASEMENT. EASEMENT MUST EXTEND A MINIMUM OF 3ft BEYOND VAULT.
2. WHERE VAULT IS IN CURRENT OR FUTURE SIDEWALK, LID ELEVATION MUST BE SURVEYED & SET AT SIDEWALK FINISHED GRADE. SET LID TO WITHIN 1" OF FINISHED GRADE WITH H2-PRECAST RISERS. H2 RISERS MUST BE USED FOR ADJUSTMENTS 2" OR MORE. USE GROUT FOR FINAL LEVELING. IN LANDSCAPE AREAS, SET LID 2" ABOVE FINISHED GRADE.
3. 6" MAX LID ADJUSTMENT (MEASURED FROM TOP OF LID TO TOP OF VAULT).
4. FOR VAULTS INSTALLED ON SLOPES, CONSTRUCT A 6'x6' PAD WITH RETAINING STRUCTURES REQUIRED TO MAINTAIN STABLE INSTALLATION AND APPROPRIATE COVER OVER PIPE. SEE DETAIL W-23 FOR RETAINING WALLS.
5. INSTALL MASTIC BETWEEN VAULT SECTIONS.
6. LOCATE VAULTS 5ft MIN FROM POWER HAND-HOLES. TRANSFORMERS SHALL BE ON OPPOSITE LOT CORNER.
7. EXTEND SERVICE LINE TO PROPERTY LINE FOR CONNECTION BY PROPERTY OWNER.
8. IN UNPAVED TRAVELED AREAS, INCLUDING GRAVELED SHOULDERS, DRIVES, AND ROADS, INSTALL 2" DEEP, 4'x4' HMA APRON CENTERED ON THE LID. SLOPE TO DRAIN AWAY FROM LID.
9. OUTSIDE OF SIDEWALKS, SECURE LID FRAME TO VAULT WITH LIQUID NAILS POLYURETHANE CONSTRUCTION ADHESIVE, LN-950



East Wenatchee Water District

WATER SYSTEM STANDARD DETAIL

COPYRIGHT 2025 EAST WENATCHEE WATER DISTRICT. MAY BE REPRODUCED UNMODIFIED FOR DISTRICT PROJECTS. OTHER REPRODUCTION OR USE WITHOUT THE DISTRICT'S WRITTEN CONSENT IS PROHIBITED.

WATER SERVICE, AIR VALVE, BLOW OFF VAULT INSTALLATION DETAILS

FILENAME: EWD TW3
REVISED: DEC 21, 2021

DRAWING No. W-29
SHEET No. 17