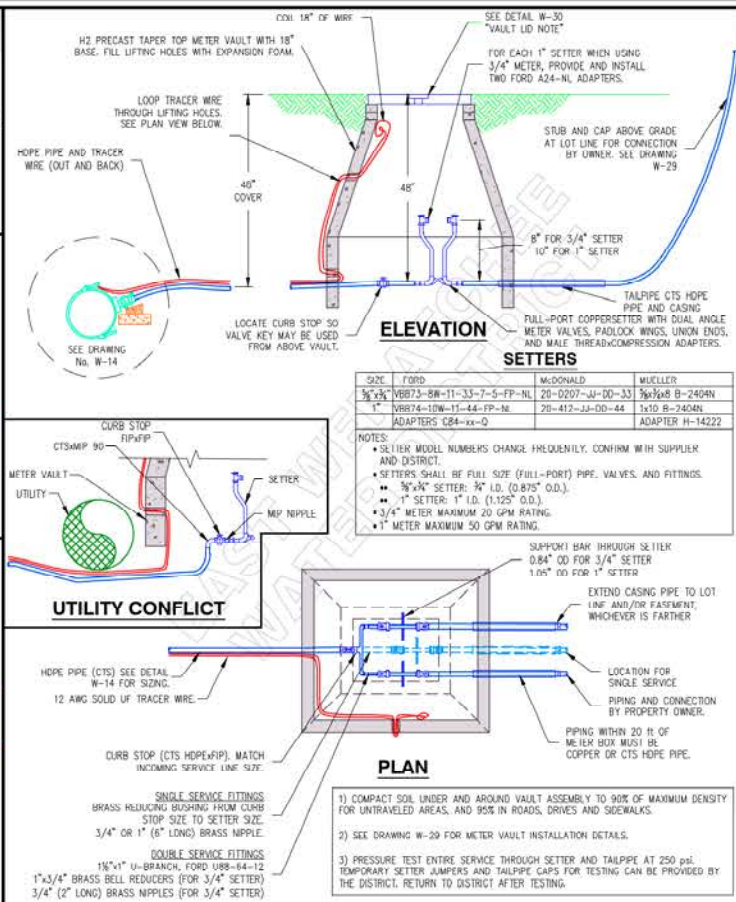
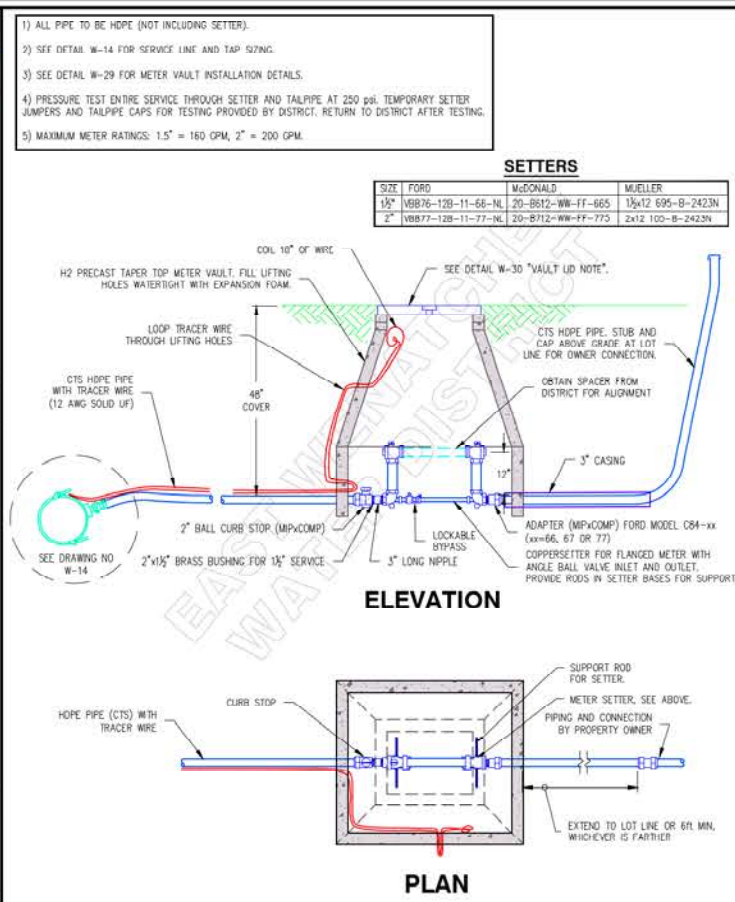


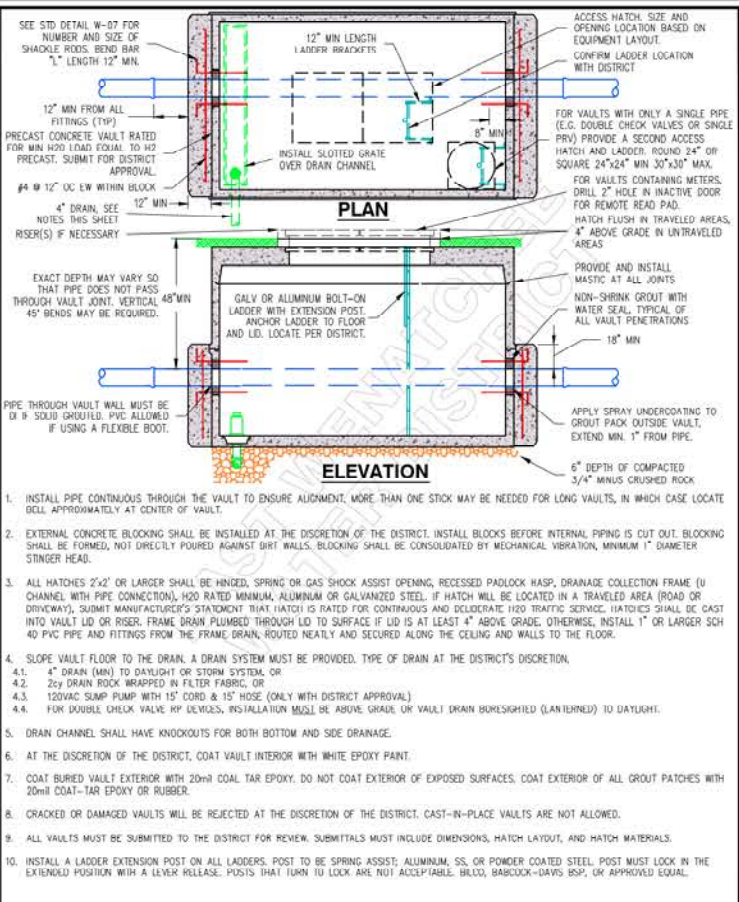
East Wenatchee Water District	WATER SYSTEM STANDARD DETAIL
Water Service, Air Valve, Blow Off Vault Installation Details	
DRAWING NO. W-29 SHEET NO. 17	



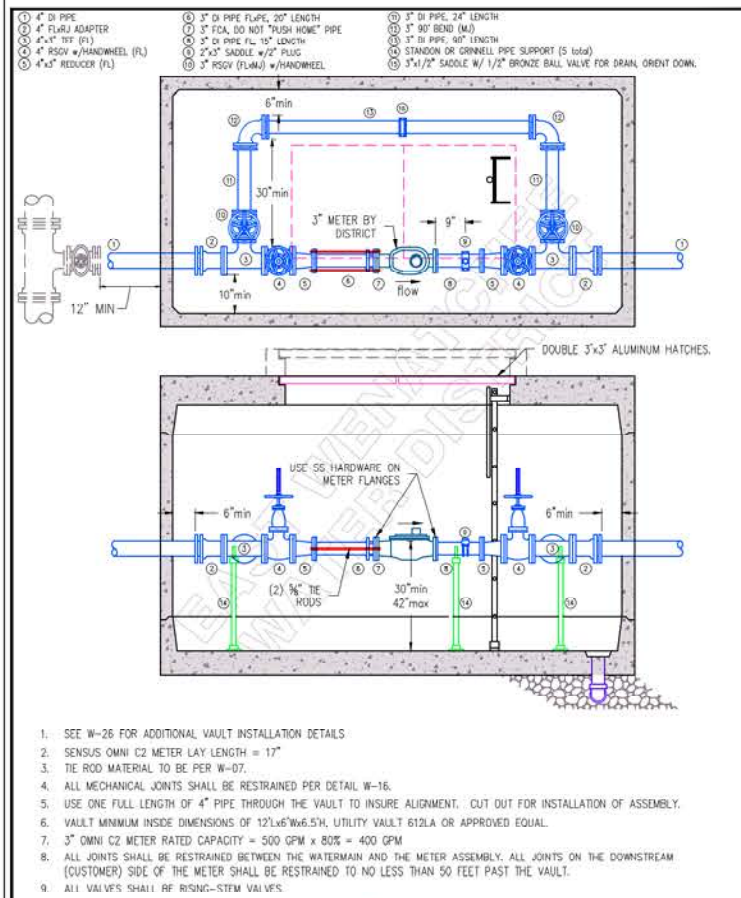
East Wenatchee Water District	WATER SYSTEM STANDARD DETAIL
3/4" AND 1" SINGLE AND DOUBLE WATER SERVICES	
DRAWING NO. W-21 SHEET NO. 18	



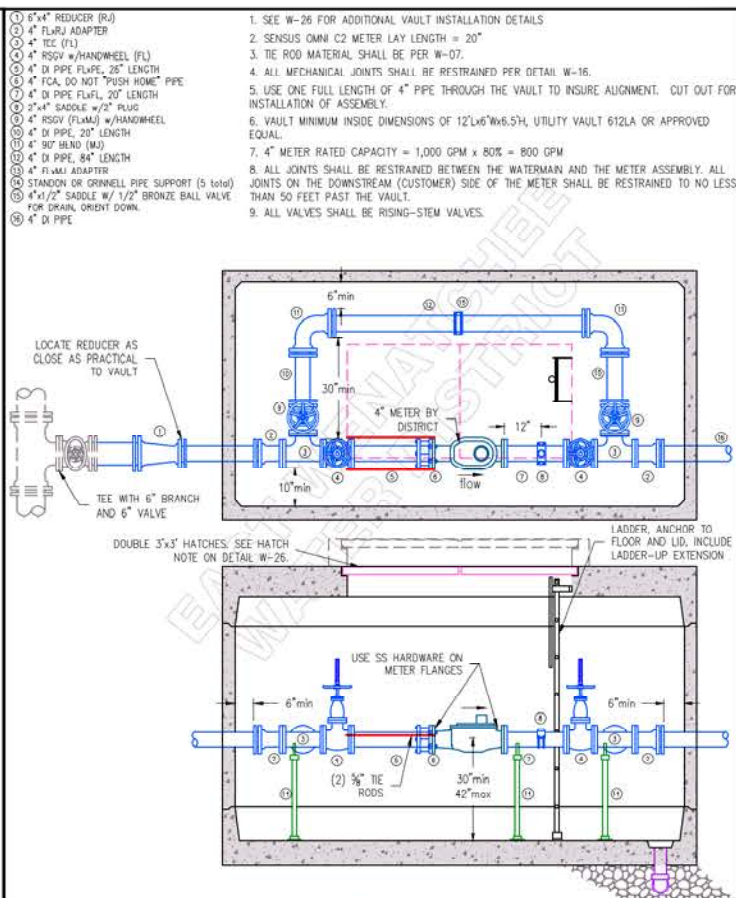
East Wenatchee Water District	WATER SYSTEM STANDARD DETAIL
1 1/2" AND 2" WATER SERVICE	
DRAWING NO. W-18 SHEET NO. 19	



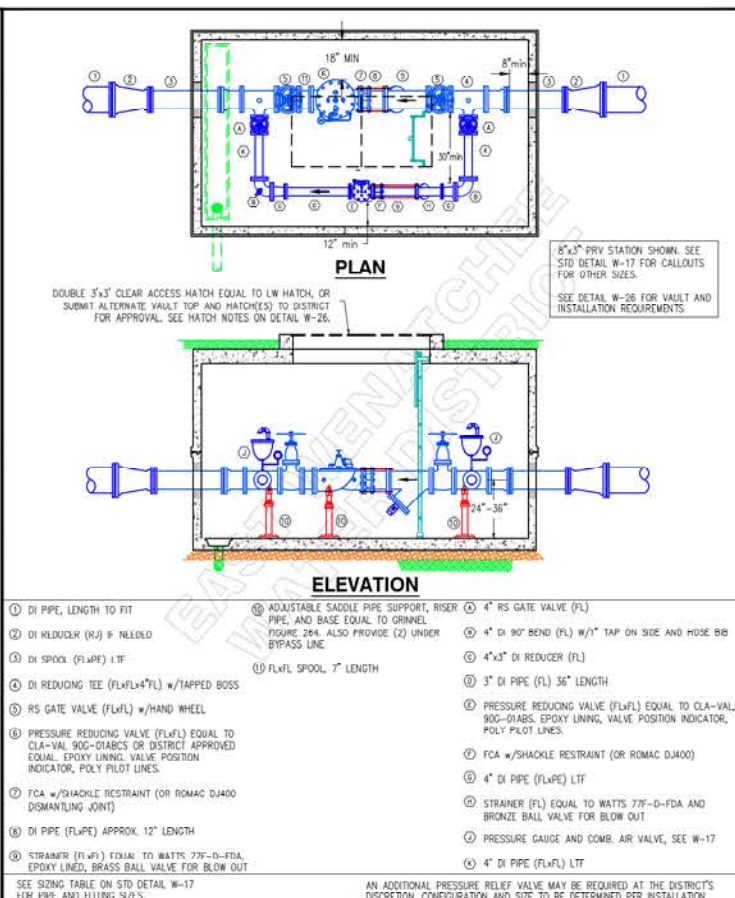
East Wenatchee Water District	WATER SYSTEM STANDARD DETAIL
LARGE VAULTS	
DRAWING NO. W-26 SHEET NO. 20	



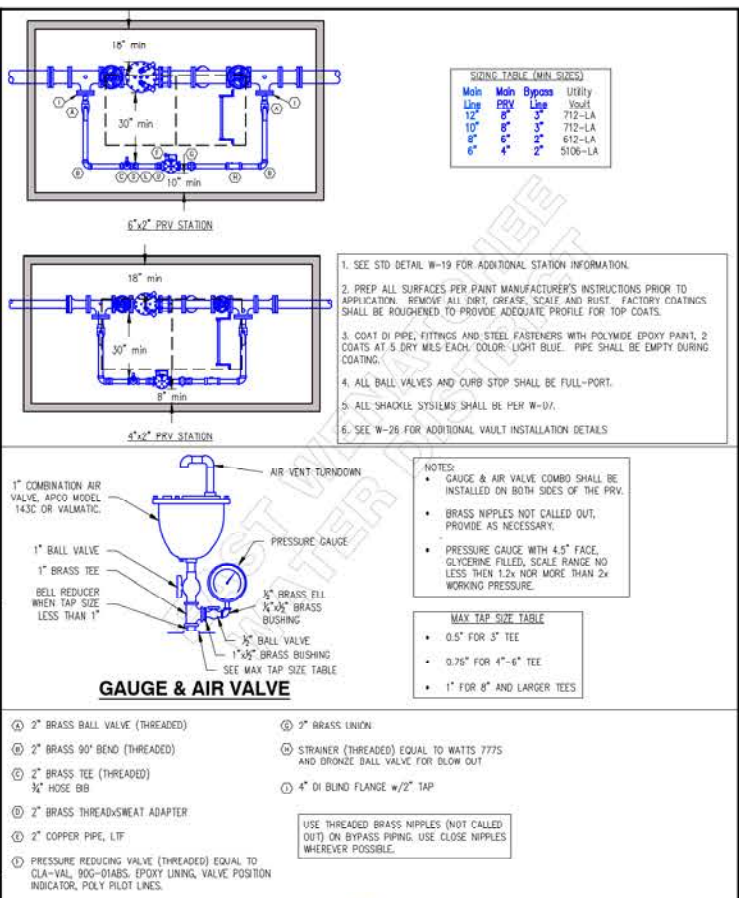
East Wenatchee Water District	WATER SYSTEM STANDARD DETAIL
3" METER ASSEMBLY	
DRAWING NO. W-20 SHEET NO. 21	



East Wenatchee Water District	WATER SYSTEM STANDARD DETAIL
4" METER ASSEMBLY	
DRAWING NO. W-24 SHEET NO. 22	

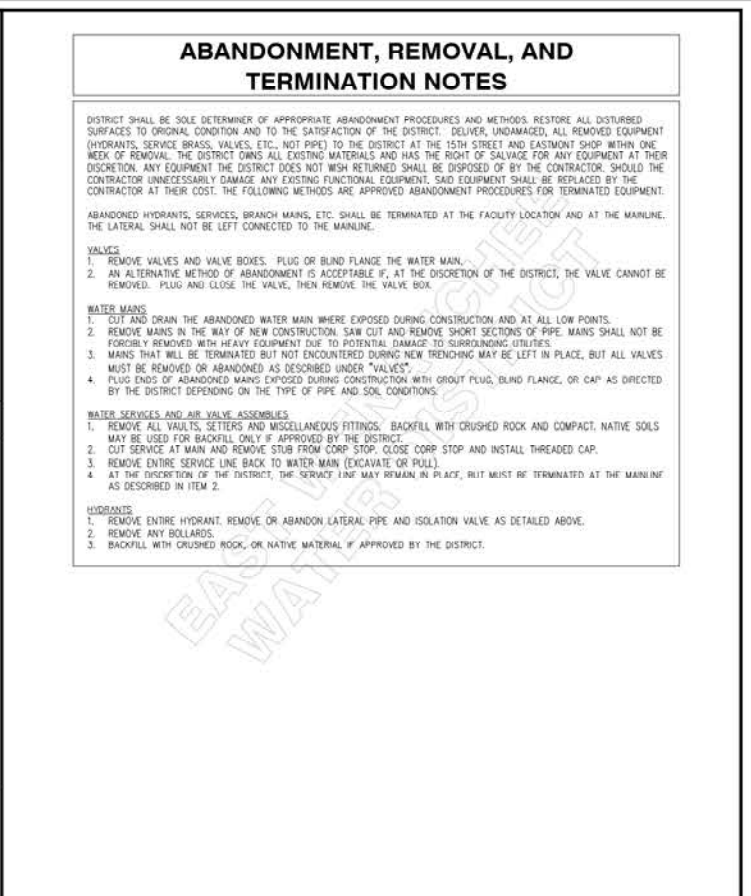
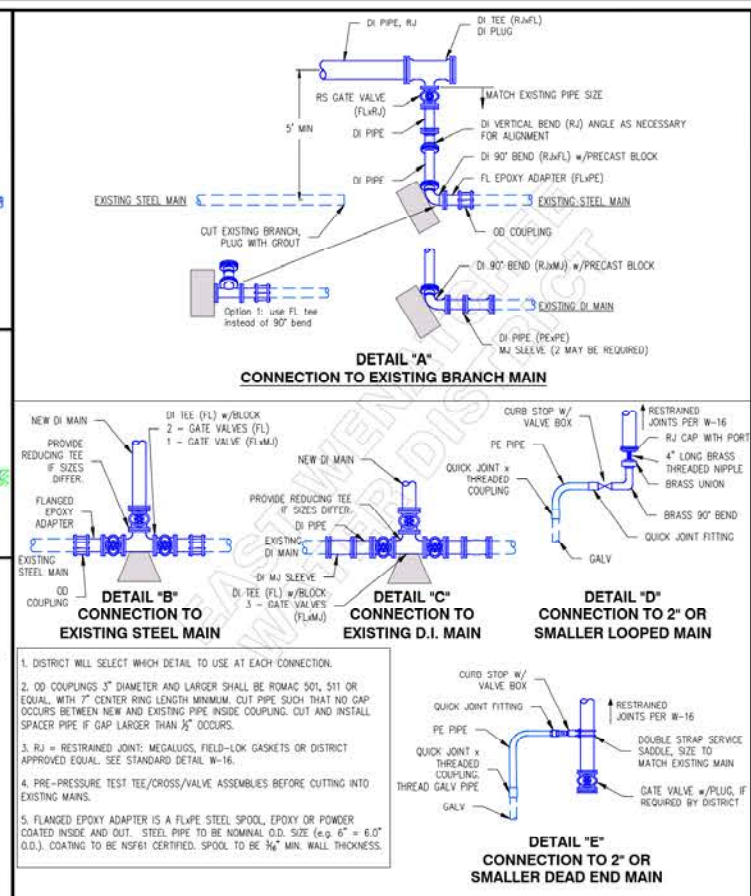
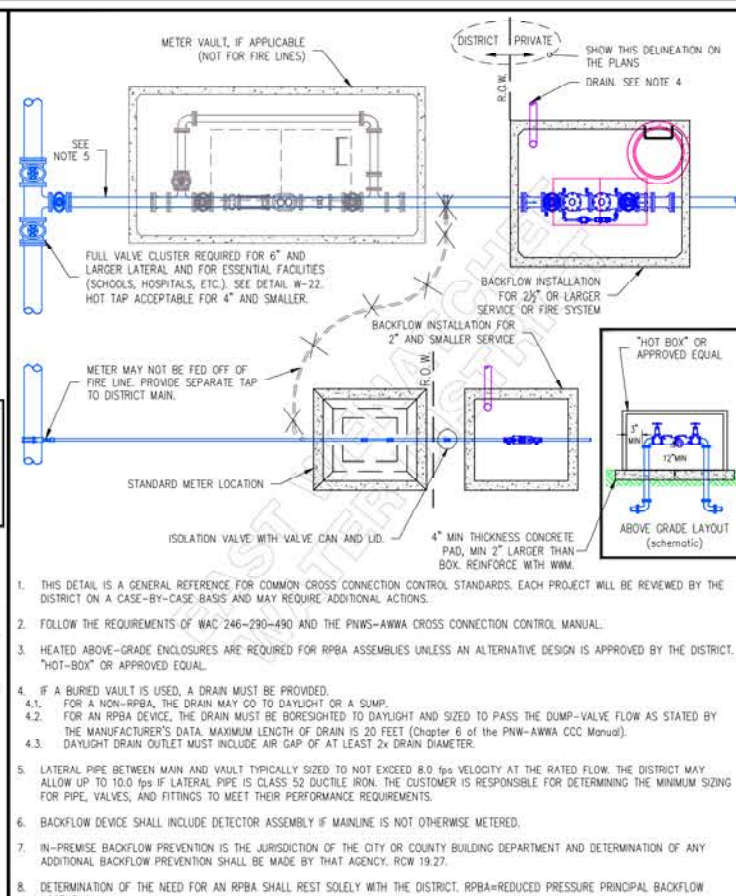
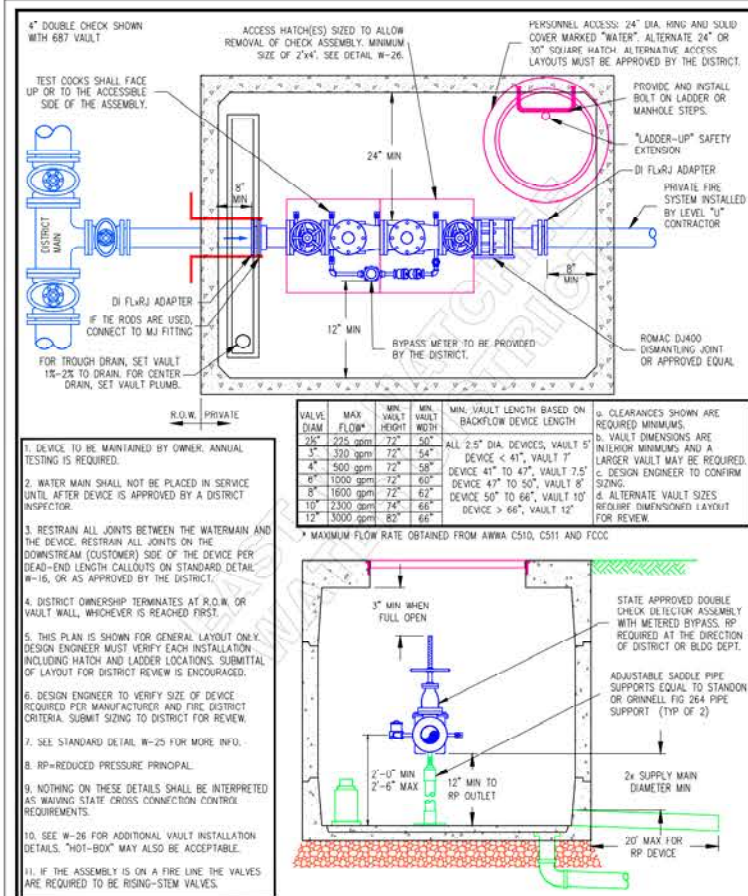


East Wenatchee Water District	WATER SYSTEM STANDARD DETAIL
PRESSURE REDUCING STATION	
DRAWING NO. W-19 SHEET NO. 23	



East Wenatchee Water District	WATER SYSTEM STANDARD DETAIL
PRESSURE REDUCING STATION	
DRAWING NO. W-17 SHEET NO. 24	





East Wenatchee Water District

WATER SYSTEM STANDARD DETAIL
BACKFLOW PREVENTION ASSEMBLY

File:EWDT04 | Revised: MAR 30, 2023 | Printed: MAR 30, 2023

DRAWING NO. W-13 | SHEET NO. 25

East Wenatchee Water District

WATER SYSTEM STANDARD DETAIL
BACKFLOW ASSEMBLY INSTALLATION

File:EWDT05 | Revised: MAR 30, 2023 | Printed: MAR 30, 2023

DRAWING NO. W-25 | SHEET NO. 26

East Wenatchee Water District

WATER SYSTEM STANDARD DETAIL
CONNECTIONS TO EXISTING MAINS

File:EWDT08 | Revised: FEB 10, 2023 | Printed: FEB 10, 2023

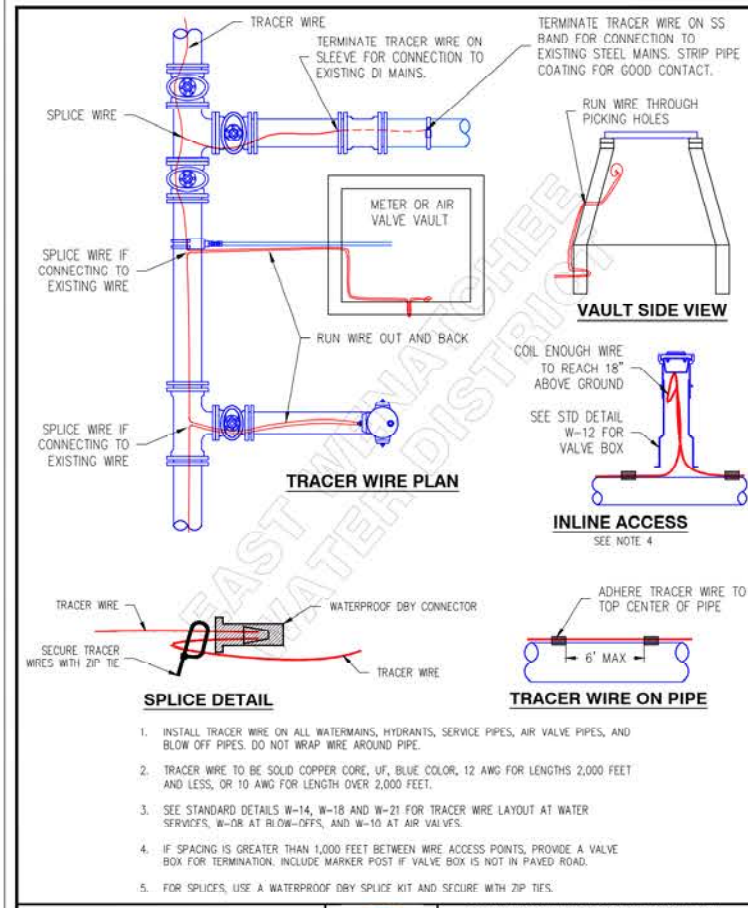
DRAWING NO. W-22 | SHEET NO. 27

East Wenatchee Water District

WATER SYSTEM STANDARD DETAIL
ABANDONMENT AND REMOVAL OF TERMINATED FACILITIES

File:EWDT09 | Revised: JAN 7, 2020 | Printed: JAN 7, 2020

DRAWING NO. W-15 | SHEET NO. 28



East Wenatchee Water District

WATER SYSTEM STANDARD DETAIL
TRACER WIRE

File:EWDT03 | Revised: DEC 21, 2021 | Printed: DEC 21, 2021

DRAWING NO. W-31 | SHEET NO. 29

REVISION HISTORY

JUNE 2016

- W-13 REVISED MINIMUM VAULT SIZE REQUIREMENTS
- W-13 REVISED SADDLE FIT RANGE
- W-18 ADDED MUELLER PRODUCT INFORMATION TO TABLE
- W-21 ADDED MUELLER PRODUCT INFORMATION TO TABLE
- W-30 ADDITIONAL SPACING REQUIREMENTS FOR CASING RUNNERS

JANUARY 2017

- W-01 REVISED WATER MAIN COVERAGE DEPTH NOTE
- W-01 REVISED THE THRUST RESTRAINT NOTE
- W-01 INCLUDED SETTERS AND TAILPIPE IN PRESSURE TEST NOTE
- W-01 INCLUDED OPEN END OF VALVES IN PIPE PLUG NOTE
- W-06 REMOVED DEADMAN THRUST BLOCK DETAIL
- W-07 REVISED ATTACHMENT DETAIL TO INCLUDE A WASHER AND DOUBLE NUT OR NYLOCK NUT
- W-10 CLARIFIED CMU BLOCK SIZE REQUIRED AND ELIMINATED CMU BLOCK UNDER CURB STOP
- W-10 CLARIFIED MATERIAL ALLOWED FOR CORP STOP BLOCKING
- W-12 ADDED NOTE 8 AND ADDED PLAN VIEW OF BOX LID
- W-13 UPDATED NOTE 3 TO CLARIFY RESTRAINED PIPE REQUIREMENTS
- W-13 REMOVED THRUST BLOCKS AND SHACKLES
- W-13 CHANGED THE FCA TO A FLWRJ ADAPTER
- W-13 UPDATED VAULT MIN INTERIOR DIMENSION REQUIREMENTS TO MATCH NEW PIPE LAYOUT
- W-13 INCLUDED IPERL IN TYPE OF METER ALLOWED
- W-15 INCLUDED AIR VALVE ASSEMBLIES IN WATER SERVICE SECTION TITLE
- W-19 REMOVED WALL COLLARS FROM DETAIL
- W-20 REMOVED EXTERIOR BLOCKS AND SHACKLES, ADDED NOTE 8, UPDATED FITTING NO. 2 FROM MJ TO RJ
- W-21 REMOVED NOTE 4 REGARDING MASTIC BETWEEN CHAMBER TOP AND BASE
- W-21 ADDED NOTE REGARDING PRESSURE TESTING SERVICE
- W-21 ADDED NOTE IN ELEVATION REGARDING REQUIRED ADAPTER IN 1" SETTERS
- W-24 REMOVED EXTERIOR BLOCKS AND SHACKLES, ADDED NOTE 8, UPDATED FITTING NO. 2 FROM MJ TO RJ WITH NO FCA OPTION
- W-26 REMOVED ALL WALL COLLARS
- W-26 UPDATED NOTE 2 TO HAVE THE DISTRICT DECIDE IF EXTERNAL BLOCKS ARE REQUIRED
- W-26 CLARIFIED IN NOTE 3 TO NEATLY ROUTE DRAIN PIPING IN VAULT
- W-26 CREATED A NEW NOTE 7 ALLOWING THE DISTRICT TO REQUIRE INTERIOR PAINT
- W-26 UPDATED NOTE 8 (WAS PREVIOUSLY 7) TO REQUIRE EXTERIOR COAT OR GROUT PATCHES
- W-30 RELOCATED CASING NOTE TO CASING DETAIL, W-32
- W-30 UPDATED CONTRACTOR SHUTDOWN REQUIREMENT NOTE
- W-30 INCLUDED ASTM A307 GRADE B FOR FLANGE BOLTS
- W-31 NEW DETAIL CREATED FOR TRACER WIRE INSTALLATION
- W-32 NEW DETAIL CREATED FOR CASING PIPES

SEPTEMBER 2017

- W-01 RELOCATED DOMESTIC-MADE REQUIREMENT NOTE FROM NOTE 15 TO NOTE 1.
- W-01, W-30 SPLIT NOTE 15 INTO SEPARATE NOTES 1, 2, AND 17, RENUMBERED OTHER NOTES ACCORDINGLY.

JUNE 2018

- W-01 CLARIFIED CUSTOMER SIDE TAILPIPE IN PRESSURE TESTING NOTE
- W-01 REVISED DOMESTIC MADE REQUIREMENT NOTE TO EXCLUDE CASING PIPES
- W-02 UPDATED THE APPROVED M&H MODEL NUMBERS
- W-02 ADDED TRACER WIRE TO ELEVATION VIEW
- W-03 ADDED NOTE TO TRENCH DETAIL ABOUT TRACER WIRE INSTALLATION
- W-04 ADDED A ROW FOR SULT IN TABLE 2
- W-07 ADDED ATTACHMENT DETAIL FOR SHACKLE PLATES
- W-07 ADDED A BULLET LIST OF APPROVED MATERIALS FOR THE TIE RODS IN THE GENERAL NOTES.

JUNE 2018 (CONTINUED)

- W-08 REVISED THE TRACER WIRE TO NOT WRAP AROUND THE PIPE.
- W-10 REVISED TRACER WIRE ROUTING.
- W-10 CREATED AN ISOMETRIC OF THE BLOW-OFF TEE.
- W-10 UPDATED THE MODEL NUMBERS FOR THE APCO AIR RELEASE/VACUUM VALVE.
- W-10 CALLED OUT THE LENGTH OF THE NIPPLE UNDERNEATH THE AIR RELEASE/VACUUM VALVE.
- W-12 ADDED TRACER WIRE TO ISOLATION VALVE DETAIL
- W-12 UPDATED VALVE NOTE TO INCLUDE VALVES ON TEES.
- W-12 REVISED ISOLATION VALVE NOTE TO 4" AND LARGER
- W-12 CLARIFIED PRE-PRESSURE TEST NOTE TO SAY CLOSED SEAT.
- W-12 ADDED TO MARKER POST NOTE TO INCLUDE WHEN VALVE IS IN GRAVEL AREA.
- W-13 ADDED 12" VALVE SIZE DATA TO THE VAULT MIN. INSIDE TABLE
- W-14 ADDED 1" MIN SIZE TO PE SERVICE PIPE
- W-14 REVISED TRACER WIRE TO NOT WRAP AROUND PIPE
- W-14 INCLUDED "WHEN TAPPING EXISTING MAIN" TO NOTE ABOUT TRACER WIRE CONNECTION.
- W-16 ADDED A FUSION BONDED POLYESTER COATING REQUIREMENT TO THE MECHANICAL JOINT RESTRAINTS
- W-16 UPDATED THE REQUIRED RESTRAINED LENGTHS FOR ALL FITTINGS
- W-17 ADDED A BELL REDUCER ON THE GAUGE & AIR VALVE DETAIL
- W-17 ADDED A MAX TAP SIZE TABLE
- W-18 REVISED TRACER WIRE TO NOT WRAP AROUND PIPE
- W-18 ADDED DETAIL TO SHOW SERVICE LINE GOING UNDER CROSSING UTILITY
- W-18 ADDED 3" CASING TO ELEVATION DETAIL FOR SERVICE PIPE
- W-19 ADDED FLWRJ ADAPTERS TO EACH END OF THE MAIN PIPE IN THE VAULT
- W-19 ADDED A SPOOL OF PIPE TO SEPARATE THE PRIV'S AND MOVE THE LADDER
- W-19 REVISED ITEM NO. 4, REDUCING TEE, TO COME WITH A TAPPED BOSS
- W-20 ADDED A VALVE AND DRAIN ON THE BYPASS
- W-21 REVISED TRACER WIRE TO NOT WRAP AROUND PIPE
- W-21 UPDATED THE MUELLER MODEL NUMBER
- W-22 REMOVED NOTES AND PIPING THAT WAS REDUNDANT TO DETAIL W-15
- W-22 UPDATED GENERAL NOTE 1 TO READ WATERMAIN INSTEAD OF BRANCH
- W-22 UPDATED COUPLING NOTE TO INCLUDE ROMAC 511 COUPLING OR EQUAL WITH A 7" CENTER RING LENGTH MINIMUM.
- W-24 ADDED A VALVE AND DRAIN ON THE BYPASS
- W-26 CLARIFIED NOTE ABOUT DRILLING 2" HOLE IN DOOR, ONLY IF VAULT HAS METER
- W-26 ADDED NOTE ABOUT A SPRAY UNDERCOAT TO THE GROUT PACK
- W-26 REVISED LADDER-UP TO BE SPRING LOADED AND INCLUDED APPROVED MATERIALS FOR THE LADDER
- W-29 ADDED REFERENCE TO RETAINING WALL DETAIL TO GENERAL NOTE 4
- W-30 UPDATED THE DIMENSIONS FOR THE RECESSED HOLE FOR THE RADIO.
- W-30 ADDED NOTE STATING THE TYPE OF VALVES TO BE USED WHEN SMALLER THAN 4"
- W-31 UPDATED TRACER WIRE TO COME IN BETWEEN TWO PARTS OF VALVE BOX
- W-31 UPDATED DETAIL TO SHOW TRACER WIRE TERMINATING ON SLEEVE OR COUPLING
- W-31 REVISED THE WATERPROOF NUT TO A WATERPROOF DRY CONNECTOR
- W-31 REMOVED TRACER WIRE WRAPPING DETAIL
- W-31 ADDED GENERAL NOTE 6
- W-32 ADDED DETAIL FOR CASINGS LONGER THAN 20'
- W-32 INCLUDED A CROSS SECTION OF THE CROSS UTILITY FOR EACH CASING DETAIL.
- W-32 ADDED NOTE ABOUT CASING RUNNER SELECTION SIZE.
- W-32 ADDED NOTE LISTING CASING SIZE NEEDED FOR VARIOUS PUSH-ON JOINT DI CARRIER PIPE SIZES.
- W-14, W-18, W-21, W-29 CHANGED SERVICE LINE DEPTH CALLOUT TO 48" COVER.

MARCH 2019

- W-01 (NOTE 1) ADDED TO USE MOST CURRENT VERSION OF STANDARDS.
- W-01 (NOTE 1.5) ADDED TO PRELUST VALVES PRIOR TO INSTALLATION.
- W-13 ADDED MAXIMUM DRAIN PIPE LENGTH OF 20 FEET.
- W-16 ADDED MULTIPLIER FOR PVC PIPE. ADDED THAT SET-SCREW RESTRAINTS NOT ALLOWED. ADDED TYLER TUFGRIP RESTRAINTS ARE NOT ALLOWED (DUE TO QUALITY CONTROL ISSUES).
- W-25 ADDED MAXIMUM DRAIN PIPE LENGTH OF 20 FEET.
- W-30 (NOTE 23) ADDED COEFFICIENT OF FRICTION REQUIREMENT.
- W-31 REMOVED TRACER WIRE IN VALVE BOXES.

JULY 2019

- W-12 (NOTE 13) ADDED MAXIMUM GAUGE SCALE REQUIREMENT.
- W-29 CLARIFIED MAXIMUM 6" VERTICAL ADJUSTMENT.
- W-30 (NOTE 23) UPDATED LID/FRRM MODEL NUMBERS.
- W-30 (NOTE 29) ADDED NEW NOTE ABOUT DISTRICT LOANED EQUIPMENT.

JANUARY 2020

- W-02, W-14, W-18, W-21, W-31 REVISED TRACER WIRE CONFIGURATION
- W-04 REVISED PRECAST BLOCK CALLOUT LISTING AVAILABLE SIZES.
- W-12 SIGMA BOX TOPS NO LONGER ALLOWED DUE TO CLEARANCE ISSUES.
- W-12 REMOVED TRACER WIRE FROM VALVE BOX.
- W-12 ADDED VALVE BOX COLLAR.
- W-18 UPDATED METER SETTER MODEL NUMBERS.
- W-23 CHANGED HILLHOLDER WALLS FROM ROCKS TO PRECAST BLOCK.
- W-26 ADDED GAS SHOCK OPTION FOR HATCH.
- W-29 NOW GRAPHICALLY SHOWS LID ADJUSTMENT RISERS.

JANUARY 2021

- W-01 REVISED NOTE 11 THAT RESTRAINED JOINTS ARE NOW GENERALLY ALLOWED INSTEAD OF THRUST BLOCKS.
- W-02 4" STORZ ADAPTER NOW REQUIRED FOR ALL HYDRANTS.
- W-04 REVISED TABLES SO SAND AND SANDY SILT ARE THE DEFAULT MATERIAL (1.0 MULTIPLIER).
- W-08 CHANGED SWING JOINT FROM STEEL TO BRASS.
- W-11 ADDED MULTIPLE AND 4" BLOW OFF CONFIGURATION OPTIONS
- W-12 INCREASED INLINE VALVE RESTRAINED JOINT LENGTH REQUIREMENT (NOTE 5).
- W-13 REVISED VAULT SIZES
- W-16 ADDED LENGTHS FOR COMBINED BENDS.
- W-29 ADDED REQUIREMENT TO INSTALL SIDEWALK PANEL AROUND LID WHEN SIDEWALKS ARE DEFERRED.
- W-31 ADDED ACCESS BOX DETAIL.

APRIL 2021

- W-14 SADDLES, CORP STOPS, AND SERVICE LINES FOR ALL 3/4" AND 1" SINGLE AND DOUBLE METERS ARE NOW 1.5" DIAMETER
- W-25 DISTRICT MAY ALLOW LATERAL PIPE VELOCITY UP TO 10 FPS WITH CL52 DI.

MAY 2021

- W-01 ADDED THAT PRESSURE WASHERS NOT ALLOWED FOR PRESSURE TESTING.
- W-03 CHANGED PAVEMENT PATCH MATERIAL FROM CLASS B TO HMA CL 3/8". ADDED PIPE ALIGNMENT TOLERANCES.
- W-13 REVISED VAULT LENGTH CRITERIA.

SEPTEMBER 2021

- W-16 ADDED THAT McWANE/TYLER SURE-STOP GASKETS ARE NOT APPROVED.

DECEMBER 2021

- W-02 CHANGED CLOW MODEL F2500 TO MEDALLION. CHANGED MAXIMUM SHACKLE ROD LENGTH FROM 15 FEET TO 60 FEET.
- W-03 ADDED MARKER TAPE FOR PIPE IN EASEMENTS.
- W-12 ADDED EXTENSION ROD DIMENSION FROM SURFACE.
- W-13, W-26 ADDED/CLARIFIED SECONDARY ACCESS HATCH FOR VAULTS WITH A SINGLE PIPE (NOT FOR THOSE WITH INSIDE BYPASSES). REVISED LADDER LOCATION AND BRACKET REQUIREMENTS.
- W-14, W-18 CHANGED SERVICE PIPE SIZE TO 2" FOR ALL 1.5" WATER SERVICES.
- W-23 REVISED UNOBSTRUCTED SPACE AROUND THE HYDRANT TO 36" CLEAR.
- W-26, W-30 ADDED NOTE THAT CAST-IN-PLACE VAULTS NOT ALLOWED.
- W-29 CLARIFIED SIDEWALK PANEL SIZE AND SLOPE.
- W-30 ADDED NOTE ABOUT CONSTRUCTION STAKING.

2022

- W-01, MOVED MATERIALS SPECS TO W-30.
- W-03, CLARIFIED PIPE ZONE BEDDING COMPACTION METHOD AND MAXIMUM DEPTH OF 6" PER LIFT. ADDED NOTE REQUIRING CRACK SEAL ON ALL ASPHALT JOINTS.
- W-10, CLARIFIED BLUE BOARD INSULATION TO BE 2" THICK WITH A MINIMUM R-10.
- W-12, ADDED LIST OF APPROVED GATE VALVE MODELS AND EAST JORDAN IRONWORKS VALVE BOX MODEL NUMBERS.
- W-13, ADDED VALVES TO BE RISING-STEM FOR FIRE LINES; ALTERNATIVE HATCH LAYOUT TO BE APPROVED BY THE DISTRICT; AND THE BYPASS METER IS TO BE PROVIDED BY THE DISTRICT.
- W-14, CLARIFIED MARKING TAPE TO BE NON-METALLIC WHEN LOCATED ABOVE TRACER WIRE.
- W-16, GRIPPER TYPE RESTRAINT GASKETS NOT APPROVED FOR LARGER THAN 12".
- W-20, CLARIFIED VALVES TO BE RISING STEM.
- W-22, ADDED ROMAC 501 TO APPROVED COUPLINGS.
- W-25, ADDED ISOLATION VALVE BETWEEN THE METER AND BACKFLOW ASSEMBLY AND THAT THE DEVICE WILL BE IN A HOT BOX UNLESS OTHERWISE APPROVED BY THE DISTRICT.
- W-26, CLARIFIED LADDER EXTENSION POST PRODUCT REQUIREMENTS.
- W-30, BROKE OUT MATERIAL SPECS INTO SEPARATE LIST CLARIFIED VALVES TO BE RISING STEM

